

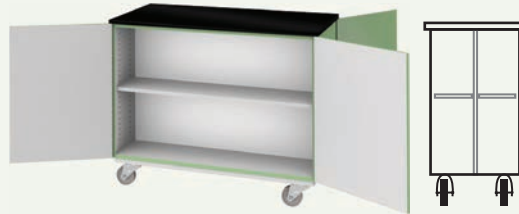
Low Mobile



7000 (open) 7002 (doors)

- W: 48"
H : 30", 36"
D : 25.5"
- 2 doors @ #7002
 - 1 adjustable shelf
 - 4" casters, front locking

Low Mobile, Double Faced



7010 (open) 7012 (doors)

- W: 48"
H : 30", 36"
D : 25.5"
- 4 doors @ #7012
 - 1 adjustable shelf each side
 - 4" casters, front locking

Low Mobile



7020 (open) 7022 (doors)

- W: 48"
H : 30", 36"
D : 25.5"
- 2 doors @ #7022
 - 1 vertical divider @ 1/3 - 2/3
 - 3 adjustable shelves
 - 4" casters, front locking

Low Mobile



7030 (open) 7032 (doors)

- W: 48"
H : 30", 36"
D : 25.5"
- 2 doors @ #7032
 - 1 vertical divider
 - 4 adjustable shelves
 - 4" casters, front locking

Low Mobile, 9 Compartments



7040 (open) 7042 (doors)

- W: 36", 48"
H : 30", 36"
D : 24.25"
- 2 doors @ #7042
 - 2 vertical dividers
 - 6 adjustable shelves
 - 4" casters, front locking

Low Mobile, 12 Compartments



7050 (open) 7052 (doors)

- W: 36", 48"
H : 30", 36"
D : 24.25"
- 2 doors @ #7052
 - 3 vertical dividers
 - 8 adjustable shelves
 - 4" casters, front locking

Low Mobile



7060 (open) 7062 (doors)

- W: 36", 48"
H : 30", 36"
D : 25.5"4
- 2 doors @ #7062
 - 3 vertical dividers
 - 4" casters, front locking

Low Mobile, Tote Trays



7070 (open) 7072 (doors)

- W: 36", 48"
H : 30", 36"
D : 25.5"
- 2 doors @ #7072
 - 1 vertical divider
 - 1 adjustable shelf
 - 5 tote trays #0004 @ 30" H
 - 6 tote trays #0004 @ 36" H
 - 4" casters, front locking

Low Mobile, Tote Trays



7080 (open) 7082 (doors)

- W: 37.375"
H : 30", 36"
D : 25.5"
- 2 doors @ #7082
 - 2 vertical dividers
 - 15 tote trays #0004 @ 30" H
 - 18 tote trays #0004 @ 36" H
 - 4" casters, front locking



MOBILE CASEWORK

Low Mobile, Tote Trays



**7090 (open)
7092 (doors)**

W: 49.375"
H: 30", 36"
D: 25.5"

- 2 doors @ #7092
- 2 vertical dividers
- 15 tote trays #0005 @ 30" H
- 18 tote trays #0005 @ 36" H
- 4" casters, front locking

Low Mobile, Tote Trays



**7100 (open)
7102 (doors)**

W: 49"
H: 30", 36"
D: 25.5"

- 2 doors @ #7102
- 3 vertical dividers
- 20 tote trays #0004 @ 30" H
- 24 tote trays #0004 @ 36" H
- 4" casters, front locking

Low Mobile, Door, Drawers



**7110 (open)
7112 (doors)**

W: 48"
H: 30", 36"
D: 25.5"

- 1 door @ #7112
- 3 equal drawers
- 1 adjustable shelf
- 4" casters, front locking

Low Mobile, Door, Drawers



**7120 (open)
7122 (door)**

W: 48"
H: 30", 36"
D: 25.5"

- 1 door @ #7122
- 4 equal drawers
- 1 adjustable shelf
- 4" casters, front locking

Low Mobile, Drawers



7160

W: 48"
H: 30", 36"
D: 25.5"

- 3 equal drawers
- 4" casters, front locking

Low Mobile, Drawers



7170

W: 48"
H: 30", 36"
D: 25.5"

- 4 equal drawers
- 4" casters, front locking

Low Mobile, Drawers



7180

W: 48"
H: 30", 36"
D: 25.5"

- 6 equal drawers
- 4" casters, front locking

Low Mobile, Drawers



7190

W: 48"
H: 30", 36"
D: 25.5"

- 8 equal drawers
- 4" casters, front locking

Low Mobile, Paper Storage



7200

W: 48"
H: 30", 36"
D: 30.25"

- 4 equal drawers
- holds 24" deep paper
- 4" casters, front locking

Low Mobile, Paper Storage



7210

W: 48"
H: 30", 36"
D: 30.25"

- 5 equal drawers
- holds 24" deep paper
- 4" casters, front locking

Tall Mobile, Double Faced



7450 (open)
7452 (doors)

W: 48"
H : 54", 66"
D : 25.5"

- double faced, each side has 2 doors @ #7452
- 3 adjustable shelves @ 54" H
- 4 adjustable shelves @ 66" H
- 4" casters, front locking

Tall Mobile, Shelves



7460 (open)
7462 (doors)

W: 48"
H : 54", 66"
D : 25.5"

- 2 doors @ #7462
- 3 adjustable shelves @ 54" H
- 4 adjustable shelves @ 66" H
- 4" casters, front locking

Tall Mobile, Shelves



7470 (open)
7472 (doors)

W: 48"
H : 54", 66"
D : 25.5"

- 2 doors @ #7472
- 1 vertical divider
- 8 adjustable shelves @ 54" H
- 10 adjustable shelves @ 66" H
- 4" casters, front locking

Tall Mobile, Shelves

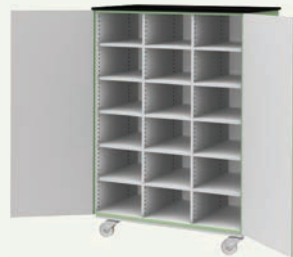


7480 (open)
7482 (doors)

W: 48"
H : 54", 66"
D : 25.5"

- 2 doors @ #7482
- 1 vertical divider @ 1/3 - 2/3
- 7 adjustable shelves @ 54" H
- 9 adjustable shelves @ 66" H
- 4" casters, front locking

Tall Mobile, Cubicle

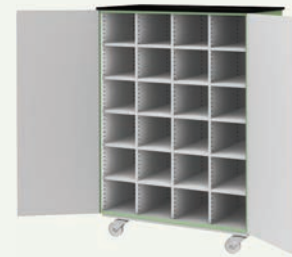


7490 (open)
7492 (doors)

W: 48"
H : 54", 66"
D : 25.5"

- 2 doors @ #7492
- 2 vertical dividers
- 12 adjustable shelves @ 54" H
- 15 adjustable shelves @ 66" H
- 4" casters, front locking

Tall Mobile, Cubicle



7500 (open)
7502 (doors)

W: 48"
H : 54", 66"
D : 25.5"

- 2 doors @ #7502
- 3 vertical dividers
- 16 adjustable shelves @ 54" H
- 20 adjustable shelves @ 66" H
- 4" casters, front locking

Tall Mobile, Magazine

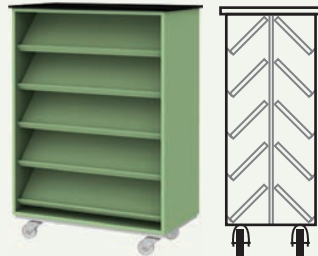


7510

W: 48"
H : 54", 66"
D : 25.5"

- 4 sloping shelves @ 54" H
- 5 sloping shelves @ 66" H
- 4" casters, front locking

Tall Mobile, Magazine, Double Faced

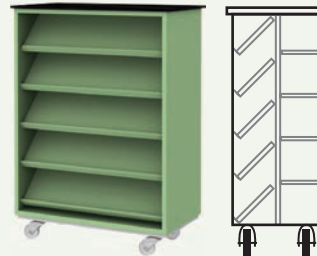


7520

W: 48"
H : 54", 66"
D : 25.5"

- double faced, each side has 4 sloping shelves @ 54" H
- 5 sloping shelves @ 66" H
- 4" casters, front locking

Tall Mobile, Magazine & Book



7530

W: 48"
H : 54", 66"
D : 25.5"

- double faced
- 4 sloping and 3 level shelves @ 54" H
- 5 sloping and 4 level shelves @ 66" H
- 4" casters, front locking

Tall Mobile, Tote Tray



7540 (open)
7542 (doors)

W: 48"
H : 54", 66"
D : 25.5"

- 2 doors @ #7542
- 1 adjustable shelf @ 54" H
- 2 adjustable shelves @ 66" H
- 2 vertical dividers
- 18 tote trays #0004
- 4" casters, front locking



Tall Mobile, Tote Tray



7550 (open)
7552 (doors)

W: 36"
H: 54", 66"
D: 25.5"

- 2 doors @ #7552
- 2 vertical dividers
- 30 tote trays #0004 @ 54" H
- 39 tote trays #0004 @ 66" H
- 4" casters, front locking

Tall Mobile, Tote Tray



7560 (open)
7562 (doors)

W: 48"
H: 54", 66"
D: 25.5"

- 2 doors @ #7562
- 2 vertical dividers
- 30 tote trays #0005 @ 54" H
- 39 tote trays #0005 @ 66" H
- 4" casters, front locking

Tall Mobile, Tote Tray



7570 (open)
7572 (doors)

W: 48"
H: 54", 66"
D: 25.5"

- 2 doors @ #7572
- 3 vertical dividers
- 40 tote trays #0004 @ 54" H
- 52 tote trays #0004 @ 66" H
- 4" casters, front locking

Tall Mobile, Drawers



7580 (open)
7582 (doors)

W: 48"
H: 54", 66"
D: 25.5"

- 2 doors @ #7582
- 1 adjustable shelf
- 3 equal drawers
- 4" casters, front locking

Tall Mobile, Drawers



7590 (open)
7592 (doors)

W: 48"
H: 54", 66"
D: 25.5"

- 2 doors @ #7592
- 1 adjustable shelf
- 4 equal drawers
- 4" casters, front locking

Tall Mobile, Drawers



7600 (open)
7602 (doors)

W: 48"
H: 54", 66"
D: 25.5"

- 2 doors @ #7602
- 1 adjustable shelf
- 6 equal drawers
- 4" casters, front locking

Tall Mobile, Drawers



7610 (open)
7612 (doors)

W: 48"
H: 54", 66"
D: 25.5"

- 2 doors @ #7612
- 1 adjustable shelf
- 8 equal drawers
- 4" casters, front locking

Tall Mobile, Wardrobe



7620 (open)
7622 (doors)

W: 48"
H: 66"
D: 25.5"

- 2 doors @ #7622
- 1 fixed shelf
- 1 clothing rod
- 4" casters, front locking

Tall Mobile, Wardrobe



7630 (open)
7632 (doors)

W: 48"
H: 66"
D: 25.5"

- 2 doors @ #7632
- 1 clothing rod
- 1 vertical divider
- 4 adjustable shelves
- 4" casters, front locking

Tall Mobile, Wardrobe



7640 (open)
7642 (doors)

W: 48"
H: 66"
D: 25.5"

- 2 doors @ #7642
- 1 clothing rod
- 1 vertical divider
- 2 adjustable shelves
- 2 file drawers, letter size
- 4" casters, front locking

Tall Mobile, Wardrobe



7650 (open)
7652 (doors)

W: 48"
H: 66"
D: 25.5"

- 2 doors @ #7652
- 1 fixed shelf
- 12 double coat hooks
- 4" casters, front locking

Tall Mobile, Double Faced Wardrobe



7660 (open)

7662 (doors)

W: 48"

H : 66"

D : 25.5"

- double faced, each side has
2 doors @ #7662
1 fixed shelf
12 double coat hooks
- 4" casters, front locking

Toy Cart



7700

W: 30"

H : 20"

D : 21"

- 4" casters

Mobile Demonstration Unit



7702

W: 62"

H : 36"

D : 31"

- demo mirror, adjustable tilt & height
- 2 doors
- 2 adjustable shelves
- 4 drawers
- 4" casters, front locking

Mobile Demonstration Unit



7712

W: 62"

H : 36"

D : 31"

- demo mirror, adjustable tilt & height
- 2 doors
- 2 adjustable shelves
- 4 drawers
- 4" casters, front locking

Options for Mobile Demonstration Units

- 2 burner cook top
- appliance power unit, powers mixer, blender, juicer
- duplex receptacles
- sink & faucet w/ self-contained water supply and drain receptacle